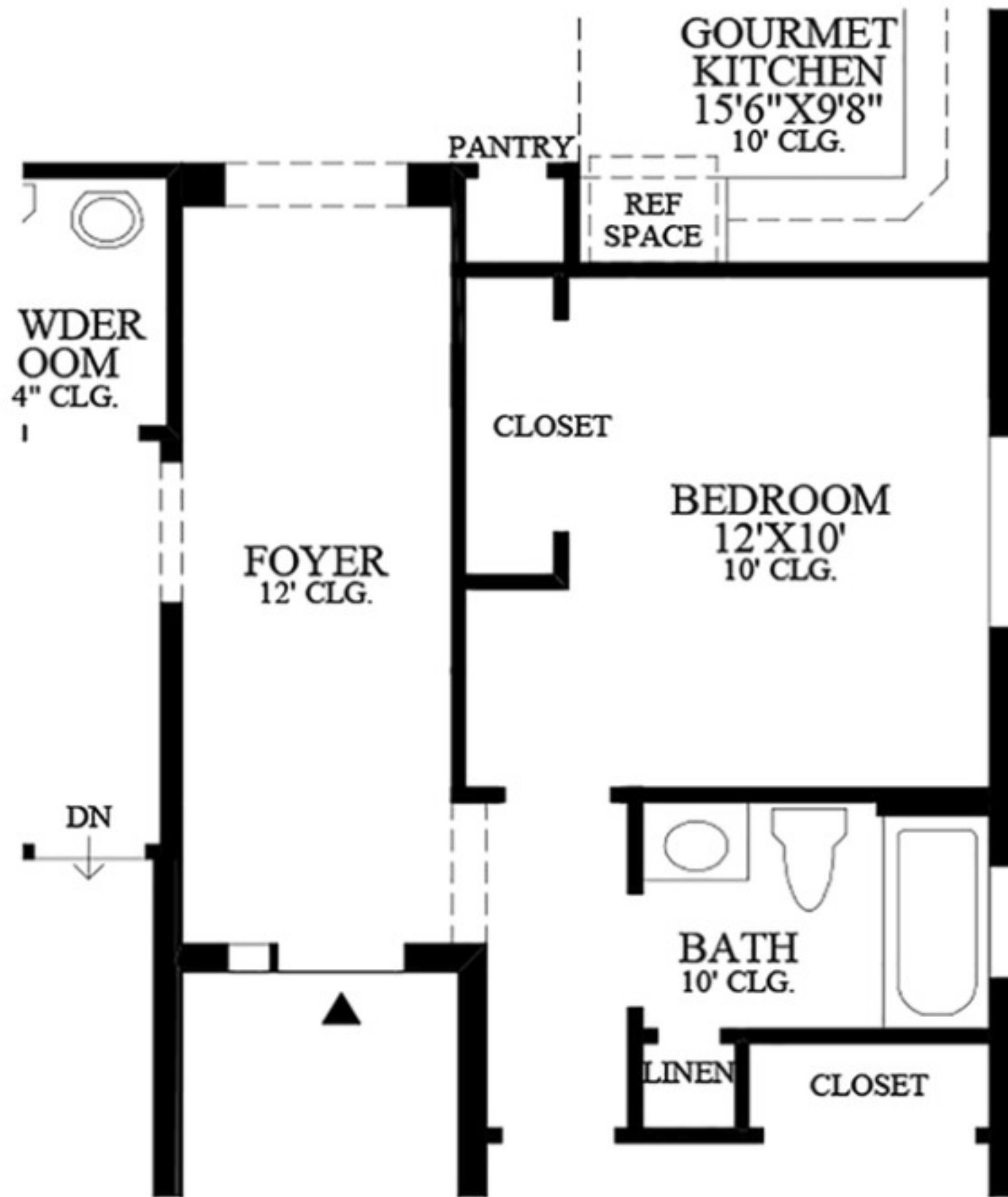




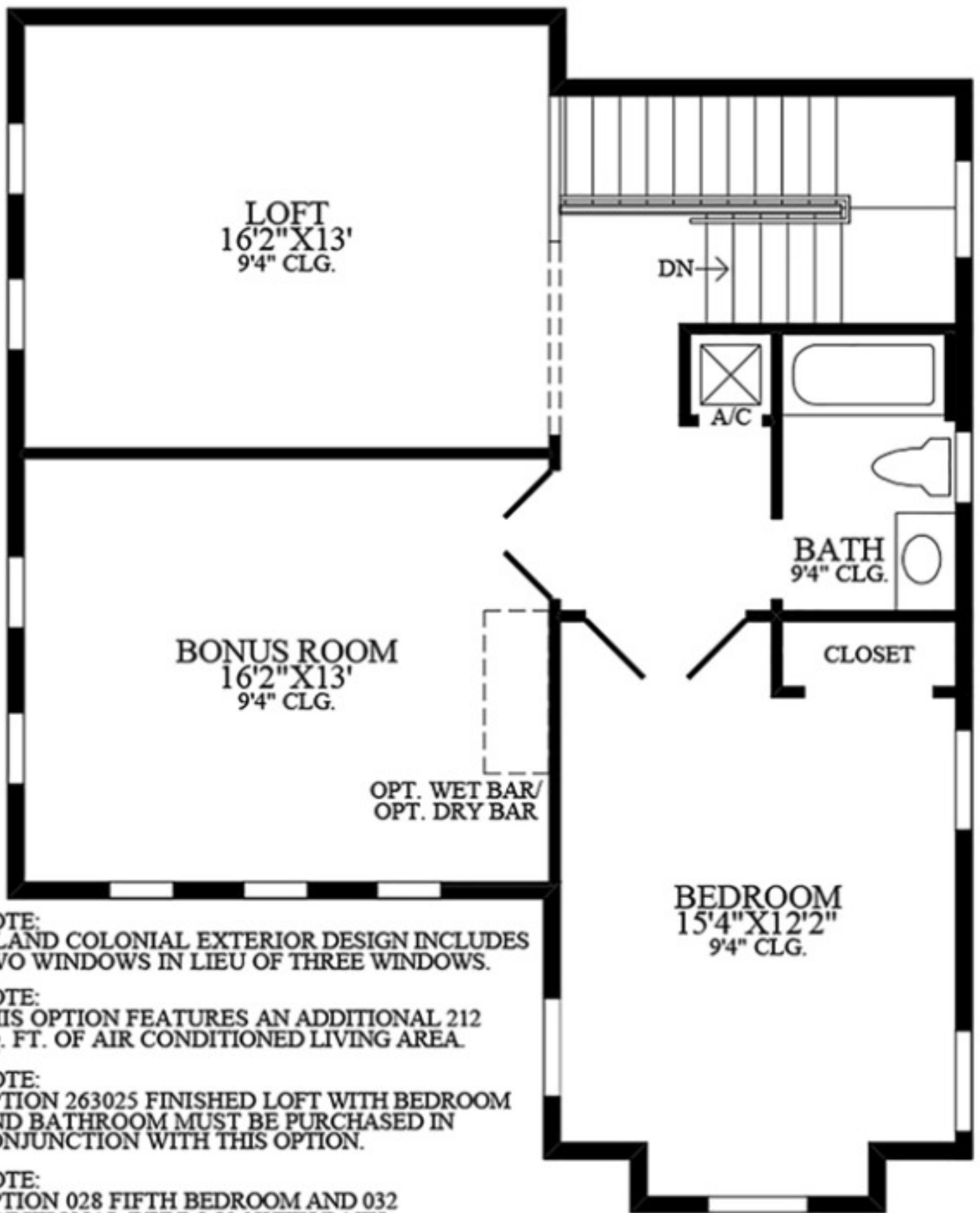
Floor Plan



NOTE:
OPTION 263025
FINISHED LOFT WITH
BEDROOM AND
BATHROOM CANNOT B
PURCHASED IN
CONJUNCTION WITH
THIS OPTION.

* DENOTES HIGH WINDOW

SHOWN WITH OPTIONAL BEDROOM IN LIEU OF STUDY



LOFT
16'2" X 13'
9'4" CLG.

BONUS ROOM
16'2" X 13'
9'4" CLG.

OPT. WET BAR/
OPT. DRY BAR

DN →

A/C

BATH
9'4" CLG.

CLOSET

BEDROOM
15'4" X 12'2"
9'4" CLG.

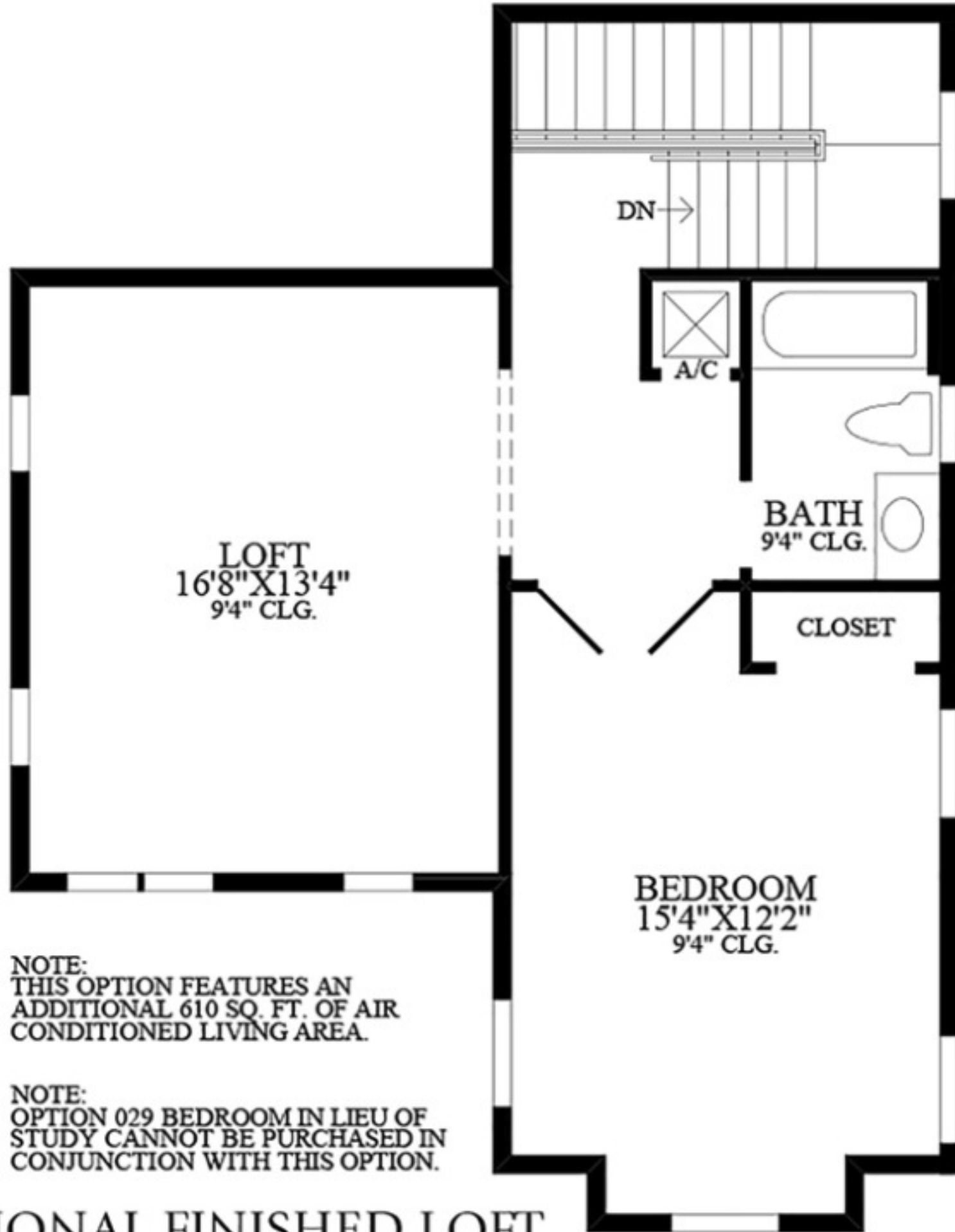
NOTE:
ISLAND COLONIAL EXTERIOR DESIGN INCLUDES
TWO WINDOWS IN LIEU OF THREE WINDOWS.

NOTE:
THIS OPTION FEATURES AN ADDITIONAL 212
SQ. FT. OF AIR CONDITIONED LIVING AREA.

NOTE:
OPTION 263025 FINISHED LOFT WITH BEDROOM
AND BATHROOM MUST BE PURCHASED IN
CONJUNCTION WITH THIS OPTION.

NOTE:
OPTION 028 FIFTH BEDROOM AND 032
ADDITIONAL BEDROOM WITH BATH
CANNOT BE PURCHASED IN CONJUNCTION
WITH THIS OPTION.

SHOWN WITH OPTIONAL BONUS ROOM



NOTE:
THIS OPTION FEATURES AN
ADDITIONAL 610 SQ. FT. OF AIR
CONDITIONED LIVING AREA.

NOTE:
OPTION 029 BEDROOM IN LIEU OF
STUDY CANNOT BE PURCHASED IN
CONJUNCTION WITH THIS OPTION.

SHOWN WITH OPTIONAL FINISHED LOFT
WITH BEDROOM AND BATHROOM

NOTE:
 OPTION 263025 FINISHED LOFT WITH
 BEDROOM AND BATHROOM MUST
 BE PURCHASED IN CONJUNCTION
 WITH THIS OPTION.

NOTE:
 OPTION 029 BEDROOM IN LIEU OF
 STUDY CANNOT BE PURCHASED IN
 CONJUNCTION WITH THIS OPTION.



* DENOTES HIGH WINDOW

SHOWN WITH STAIRS TO OPTIONAL BONUS ROOM